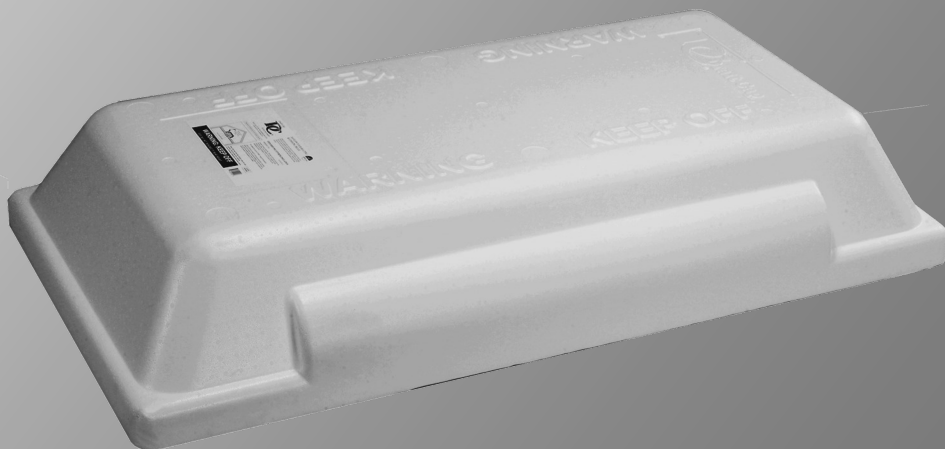
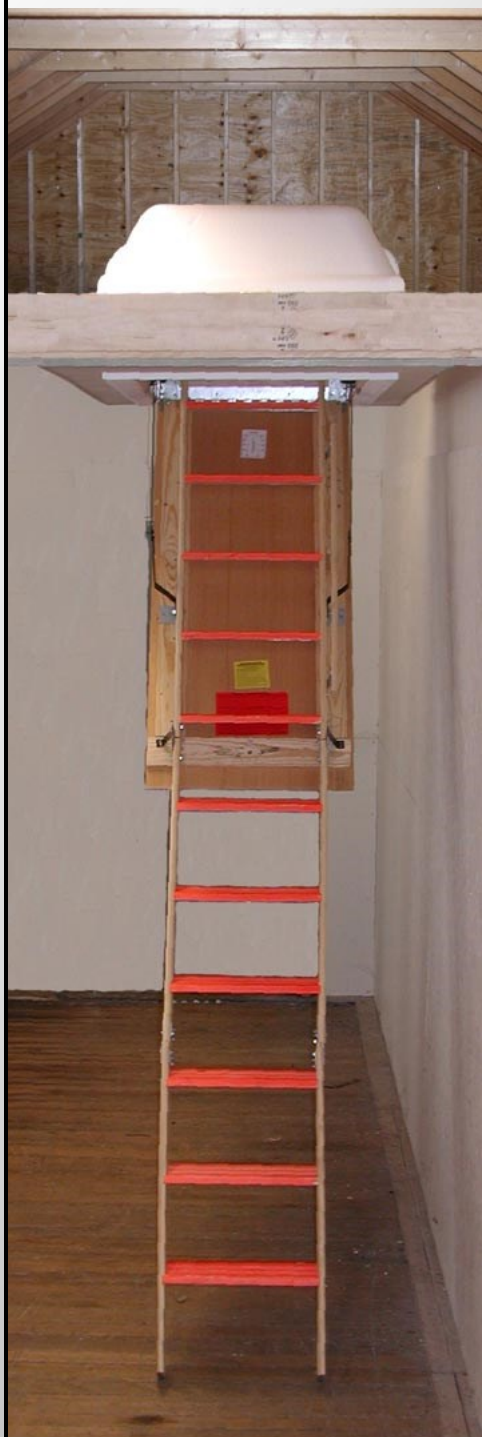


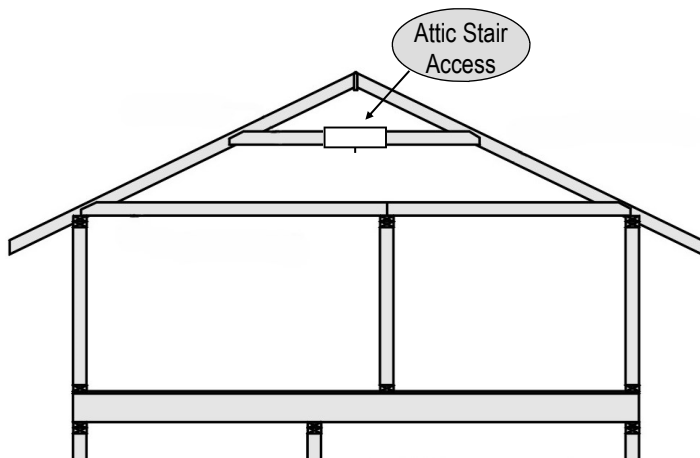


THE SIMPLE SOLUTION TO INSULATION BUILDING CODES

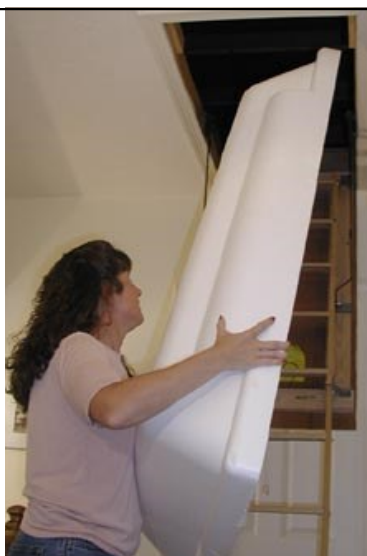
BENEFITS of DRAFT CAP

- Satisfies current energy building codes for insulation over attic access panel.
- Made of durable, dust-free foam.
- Lightweight – can easily be carried by one individual.
- R-value of 11.
- The Draft Cap material has met the UL-94HF-1 rating for flammability.
- Draft Cap saves money - reduces heat loss in the winter and heat gain in the summer that occurs through the attic stair opening.





The Department of Energy describes the attic access as a “big hole” representing one of the biggest deficiencies in thermal barrier between the attic and living areas. As a result, the national building energy code has adopted guidelines for insulating the opening. Draft Cap offers a simple solution, with a product that sits over the opening. With an R-value of 11, Draft Cap offers a quick way to satisfy building codes, reduce heat loss in the winter and heat gain in the summer, and increase overall structure insulation.



Draft Cap is lightweight, and easily installed in minutes. Made of durable dust-free foam, Draft Cap covers the attic stair opening to prevent air flow, and meets all local and federal energy codes for insulation.

DRAFT CAP SPECIFICATIONS

- Fits standard 25-1/2” x 54” R.O.
- Can be used in 2 x 6, 2 x 8, 2 x 10 and 2 x 12 floor construction.
- Outside dimensions of unit approximately 31” x 59-1/2” x 10-1/2”
- Total underside clearance is 7-7/8”
- Weight of unit approximately 7 pounds; wall thickness: 2-3/4”
- Material meets the UL-94HF-1 rating for flammability. Contains a fire retardant (in the event of a fire, polystyrene will not contribute in the spreading of a flame; also does not emit toxic fumes when ignited).
- Units ship 7 to a bundle; 420 units per truckload.
Bundle dimensions: 62” x 32” x 53”
- Patented; No. 6,966,153
- **Made in the U.S.A.**