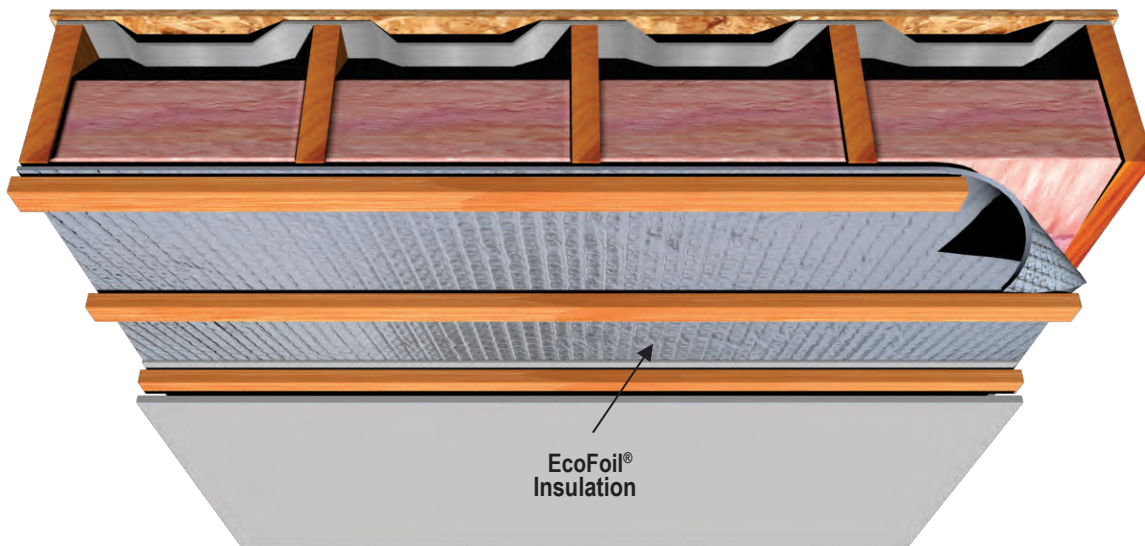


**CATHEDRAL CEILING
(UNDER JOISTS)**

- PERFORMANCE UNAFFECTED BY MOISTURE AND HUMIDITY
- QUICK AND EASY TO INSTALL
- REDUCES HEAT LOSS AND HEAT GAIN ALL YEAR ROUND
- WILL BLOCK UP TO 96% OF RADIANT HEAT TRANSFER

INSTALLATION METHOD

1. Install unfaced mass insulation between rafters; be sure to leave at least 2" of ventilation space between the roof and the top of the insulation.
2. Unroll and staple EcoFoil® insulation to the underside of the rafters.
3. Seal all seams and butt joints with EcoFoil® tape to ensure a continuous insulation and vapor barrier.
4. Install wood strapping over insulation at 16" intervals - perpendicular to the rafters.
5. Install drywall to the furring strips - creating a reflective airspace between insulation and drywall.



SUGGESTED PRODUCTS FOR THIS APPLICATION:

EcoFoil® Insulation Product	Solid EFM4800, EF2210, EF2510, EF2220, EF2520 (Available in Various Dimensions)
EcoFoil® Tape	EF15073 (Reflective)

- a) Check local building codes for compliance before installation. This installation sheet is intended solely to illustrate the proper location and placement of EcoFoil® Reflective Insulation products in specific constructions applications. They are not intended to illustrate proper construction methods (which is ultimately the responsibility of the builder or contractor). The installation instructions are only recommendations relating to the location and placement of EcoFoil® Reflective Insulation products and EcoFoil® makes no claims that these construction systems are universally accurate.
- b) All warranties are void if EcoFoil® Reflective Insulation products are used in exterior applications, or in non-enclosed systems or buildings.
- c) Exercise caution when using EcoFoil® Reflective Insulation products near and around electrical wiring and devices.

