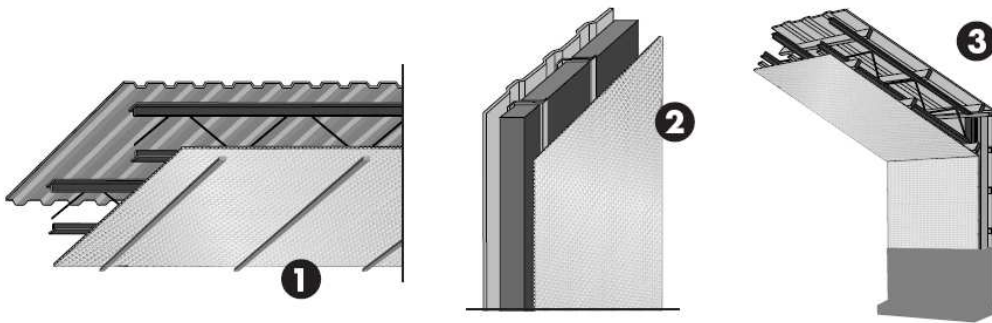


INSTALLATION SHEET

Metal Building Retrofit

PRODUCT: Double Bubble Foil/Foil Insulation or
Double Bubble White/Foil



Benefits:

- Ideal for Metal Building Applications
- Quick, clean and easy to install
- Reduces Radiant Heat loss/gain and adds R-Value
- Unaffected by condensation and humidity
- Excellent Vapor Barrier

Installation Method:

Ceiling: Note: All water pipes should be below the Reflective Insulation to prevent freezing.

1. Install Foil Bubble Insulation against metal roof framing using industrial glue or double sided tape for a temporary hold.
2. Attach wood strips perpendicular to framing members every 24" using metal screws or Foil/White Tape.
3. Seal all seams with Foil or White Tape.

Wall:

1. Use metal channels and metal screws or double sided tape to attach Foil Bubble Insulation temporarily to wall framing.
2. Screw metal attachment strips into place every 24" for a permanent hold.
3. Seal seams with Reflective Foil / White Tape.

